

PHISHOP'S EXCLUSIVE

#ENG

CARTRIDGES MANUAL

FOR SIMPLICITY ARTIST AND MASTER

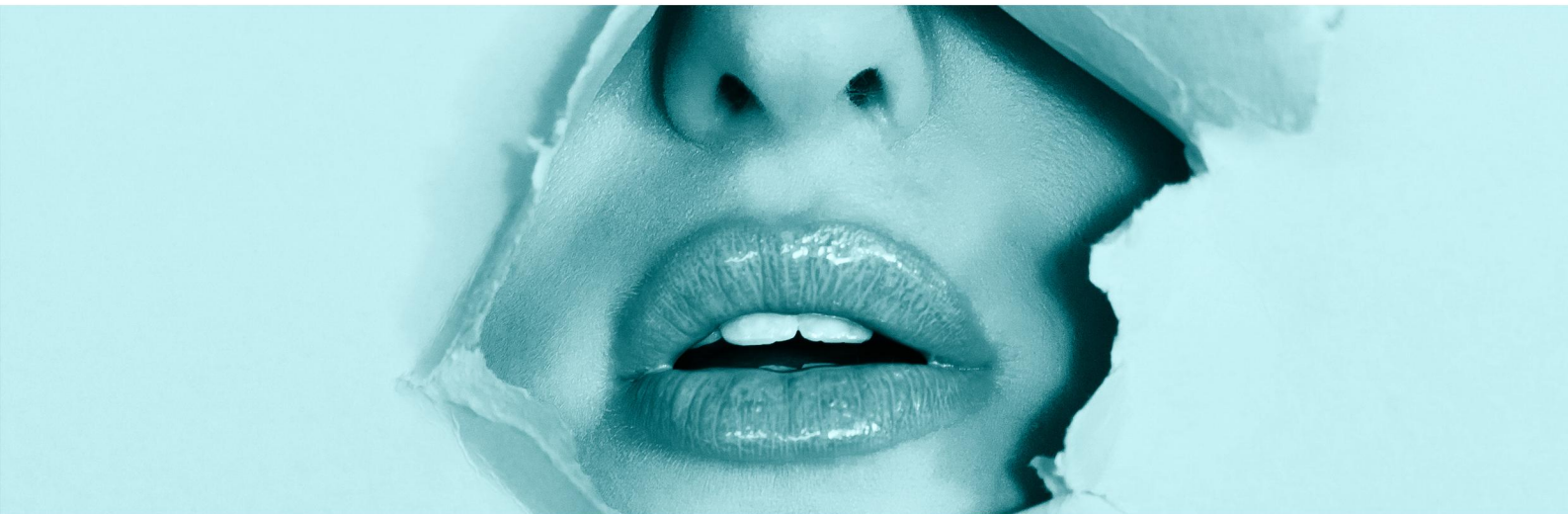


IN THE NAME OF **BRANKO BABIC** AND **PHIACADEMY**

THANK YOU FOR YOUR

LOYALTY AND TRUST

IT'S A SUPERB FEELING TO KNOW THAT YOU
RECOGNIZE OUR COMMITMENT TO QUALITY AND INNOVATION



One of the main objectives of Official PhiShop is a constant enlargement of our product range, in order to give you a solution for every need possible. We carefully monitor all your needs and requests. This is why we would like to present you a detailed instruction manual which will be your guide while choosing cartridges for our Simplicity PMU machines - Simplicity Artist and Simplicity Master.

We hope this will make your work easier and answer some important questions you had. We believe customer service should not be a department – it should be the entire company.- This is why we want to ensure quality and good service, providing you everything possible to effectively solve all your issues. Our whole team is working passionately every day to strengthen our relationship with you, and to make you feel an important member of our PhiFamily.

With much love

Official Phi Shop Team

Simplicity

Simplicity Master is a new machine that is not different from much more expensive machines on the market by its performances. It is powered by a strong German engine and thanks to Korean perfectionism it is the most silent machine on the market with the least vibration. This gamechanger is going to set new limits and possibilities in the PMU world.

Simplicity Artist is a machine with basic performances which makes it an ultra cheap machine and a good solution for beginners who are still not ready to invest a lot in PMU Base training. If a student decides to start doing PMU more seriously, this machine can always be a spare machine in the salon or a machine that will be used for microneedling only.



1P

REVO 1P (0.18mm)

This is what we would call a nano needle and is currently the sharpest needle available in the PMU market. As well as very sharp it is also very precise. This would be the best choice for creating very fine lines. You can use this for obtaining a very fine contour (and shading if you are experienced). Shading with this needle would not really be recommended for a very beginner. This needle is the best option for creating hair-strokes on brows with a PMU device, and for this technique beginners can use it also. Also a great needle for pointillism effect, for example when working on areolas. **Important:** This needle penetrates the skin easily. Make sure to correctly adjust the depth of the needle.



1P

REVO 1P (0.3)

This needle is best used for achieving fine lines, for various purposes such as eyeliner contour, enhancement of eyelashes. Also great for doing eyebrows contour and lip contour.

Important: This needle penetrates the skin easily. Make sure to correctly adjust the depth of the needle.



1P

REVO 1P (0.4)

This needle is best for obtaining a standard line, either for eyeliner contours, lip contours. Pointillism can be done with a 0.4 needle.



3R

REVO 3R (0.18)

3R needle (3 micro), is a very versatile needle. It places pigment into small areas just like a 0.4 so it can be used for contour, but in addition can also be used for shading lips and brows and eyes too. So, for example, if we need a very defined contour but the skin is too fine and fragile and bleeds with a 0.4, you can use this needle and it will be a little bit gentler on the skin but you can still get a great retention and definition. Also, because this needle doesn't go as deep, you'll find the colour won't heal as cool. 3 micro has 3 tiny needles so won't implant pigment very deep. This is good for very thin, fragile skin that bleeds easily.



3R

REVO 3R (0.25)

This cartridge is known as a 3 shader or 3r. We use this for lip shading or brow shading (powder brow).

*We wouldn't ordinarily use this for contours because the line would not be precise enough due to the pigment being placed more openly.



4F

REVO 4F (0.3)

Best for thick lines. Can be used as a shading needle, as when used on its side it has 4 horizontal needles. Note: Do not spend too much time working on the same side, instead apply the color in various stages.



5R

REVO 5R (0.25)

This cartridge is not suitable for lines, but very suitable for filling of large areas, even in gradient mode. You can use this for shading larger areas, thick brows or larger lips. Generally used for areolas too. Great for very soft shading on large area, for example when you combine microblading and shading between the hairs of bolder brows.



3FSL

REVO 3FSL (0.3)

Sloped needle has multiple needles (3) and each needle is longer than the next. Used for eyeliner shaded effect, lip shading, eyebrow shading and ombre effect. Sloped needles were mainly invented so that the artist could work at a 90° angle because the needles enter the skin at 45°

Note: Do not spend too much time working on the same side, instead apply the color in various stages.



5FSL

REVO 5FSL (0.25)

Sloped needle, primarily used for shading. Usually a cartridge chosen for lip shading. Sloped was originally designed for artist that work naturally at 90° and find it hard to slant the needle at a 45° which is usually needed for shading.



REVO TRI-M (2.00)

Cartridge specially created for area treatment by Mesotherapy or Microneedling, composed of 12 needles.

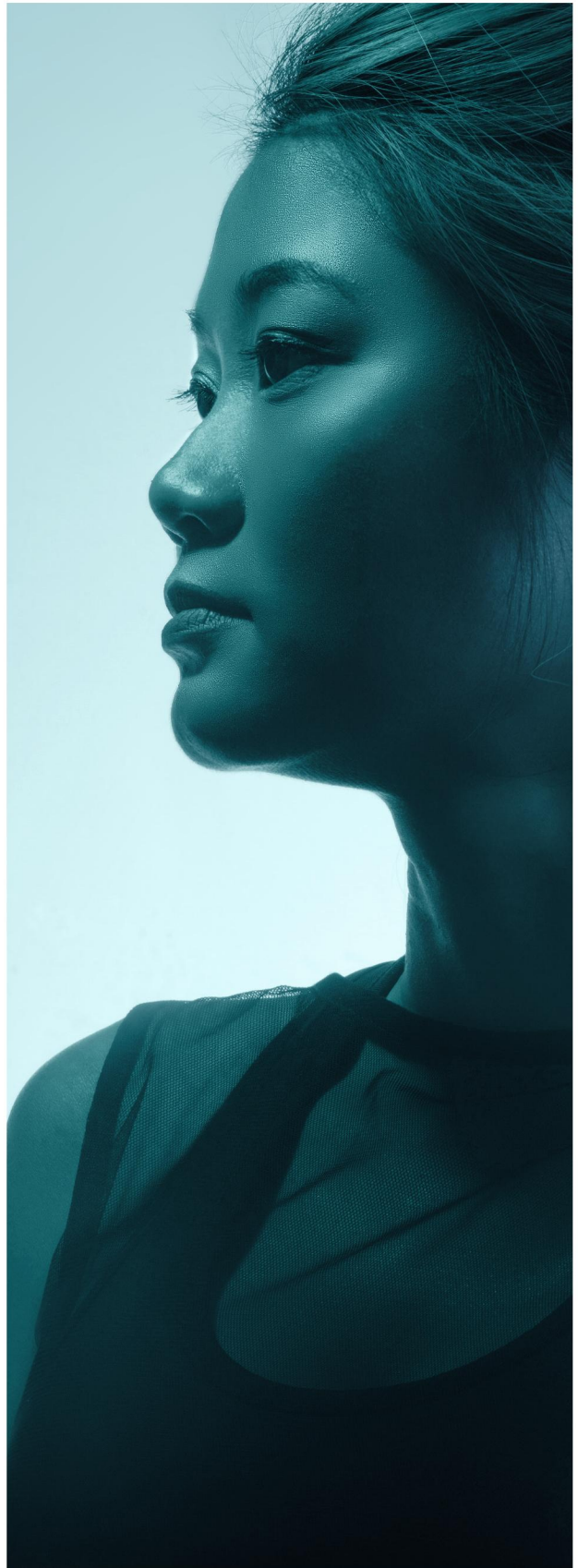


PHIBRID 15/1

PhiBrid is a Cartridge stabilizer for the simplicity machines. It can be used with problematic skin when it is almost impossible to fill in the pigment with a microblade. With fast movements add new hair between the existing ones, in places where there should be a shadow. It increases the pigment duration by 50% with normal skin. Enables freestyle technique with strokes crossing. Provides stability, precision and controlled depth.

NOTE

The bigger your needle configuration the less colour retention you will get. Needle choice is essentially down to personal preference. Again this guide is primarily intended for beginners that are not familiar with all of the needle configuration. Once you are more experienced you can learn to control your speed and pressure and can even use a nano to do all shading. But this takes more time, patience and lots of practise.



SPEED ADJUSTMENT GUIDE

These machines are more than powerful enough, so it is mainly recommended to use medium speed (level 5), when using smaller needle configurations. When you use smaller needles these are much sharper so you won't need a lot of power to pierce the skin. When working with a larger needle (for example a 5 shader or bigger) you would then have to turn the power up so all the needles can penetrate the skin correctly. If you're already working on high level, you would not have this option, this could potentially make it harder for skin to accept all the needles so this could result in poorer colour saturation.

So the smaller the needles - the less power you will need. If you need to use larger needles you may need to turn your device up (to 6-7). Same goes for tough skin because you will need that extra power in order to get through all of the tough scar tissue.

When you require a lot of colour saturation, for example eyeliner or contours etc, you will have to adapt the speed of your hand rather than the machine itself. Use slower hand movements for rich colour saturation, and faster hand movements for a more "scattered effect" or shading effect. Only turn speed up or down if you notice that the skin is fragile or if you observe a few spots of blood. Then you should turn the speed down and adjust until the skin no longer has a negative reaction

SIMPLICITY ARTIST & MASTER FAQ

Simplicity Artist and Master are our new models of permanent makeup machines, setting new limits and possibilities in the PMU world. Following all your requests and questions, today we would like to clarify everything about these machines, giving you a detailed instruction guide that will help you make a smart choice, when choosing your new PMU machine. Both of the simplicity machines are available at Official PhiShop with worldwide shipping provided.

WHAT KIND OF MACHINES ARE SIMPLICITY ARTIST AND MASTER?

Simplicity Machines are permanent makeup machines, used for the whole spectrum of permanent makeup techniques. You can use these machines for: lips pmu, eyeliner, shading technique, removal, scalp micropigmentation, microneedling, areola micropigmentation etc. These machines use ultra precise cartridges in 19 different variants. All simplicity cartridges are compatible with both device models.

WHAT KIND OF MACHINES ARE SIMPLICITY ARTIST AND MASTER?

Yes, It is possible on both machines. Artist machine has 5 different speed levels and Master has 7. Which speed you gonna use depends of the kind of treatment and personal preference.

Listen to your machine, practise with it and see which speed feels more comfortable to you. As both machines are powerful enough, there is no need to use too much pressure on the skin, so make sure you move gently along the direction of your line. Try to listen to the machine, it is same like music. Than slower the speed goes, the slower movements you make. If faster, than your hand also moves faster.

WHAT ARE THE MAIN BENEFITS OF SIMPLICITY MACHINES?

They are both very easy to handle, as the pen is very light to hold in the hand, which also makes the machines very travel friendly. Minimum noise, the noise has been dealt with less than 15 db, which makes it the most silent machine on the market with the least vibration. These machines use ultra precise cartridges in 19 different variants. Cartridges have special hygiene patent with silicone membrane. Since the functions are located on the headpiece, these powerful machines have a great price. They are both very versatile, and cover multiple treatments, which is super beneficial from one device. Power voltage of both machines is suitable for international use, which means they can be used worldwide with no concerns.

IS ZEN MACHINE MORE POWERFUL THAN SIMPLICITY MASTER?

The power of the machines is the same. The only difference is that Zen has separate control panel and display. Simplicity Master has no big display and because of this is much cheaper, as the display and functions are located on the headpiece. This is the reason Simplicity Master has such a good price. This machine with the German engine was made in South Korea and it possesses all the certificates necessary worldwide. This makes Simplicity Master a very smart choice for a PMU machine.



WHAT IS THE DIFFERENCE BETWEEN SIMPLICITY ARTIST AND SIMPLICITY MASTER ?

Simplicity Artist is primarily intended for beginners and students at the academy, while Simplicity Master has a purpose to be used by experienced beauticians and dermatologists. Why?

The difference between the two machines is the engine, the Simplicity Master engine is more powerful than the Artist, so it depends on the amount of work you will do daily and the type of treatments you usually perform, considering if you are a beginner which mainly does basic pmu procedures or experienced artist that also includes more advanced ones. Simplicity Master has a stronger motor that delivers more power, which also makes it a great option when working on tough skin, usually scar tissues or for paramedical use too. Considering the more powerful motor, Master is intended for more experienced artists. It has the capability to provide that extra power, for people which are also working on scar tissues or areola tissues for example. Due to the powerful engine you can operate the machine all day long, with no concerns. This is why it is intended for more experienced beauticians and dermatologists that perform high usage amounts of work daily, for various both basic and advanced pmu procedures.

On the other hand, some people have no need of this, as they are still beginners and use the machine periodically for only basic pmu services. This is when Simplicity Artist is a great choice. Simplicity artist is a machine with basic performances which makes it an ultra cheap machine and a good solution for beginners who are still not ready to invest a lot in PMU training. You can do all basic pmu techniques with the Simplicity Artist. If you start doing pmu more seriously and more intense, it can always be a spare machine in the salon, or a machine that will be used for microneedling only.